

Bluetooth 3.0 optical mouse S-MS-173-BT

INSTALLATION GUIDE

1. INTRODUCTION

Thanks for purchasing this Bluetooth optical mouse. Please note you must have a Bluetooth receiver (not included with the mouse) installed on your computer before using our S-MS-173RF-BT. This document is a generic manual explaining how to install the mouse. The steps may be different, in function of the Bluetooth receiver you use. Please refer to the manual of your Bluetooth receiver for more details.

2. PACKAGE CONTENT

Please check package content. If there misses any element, contact your reseller.

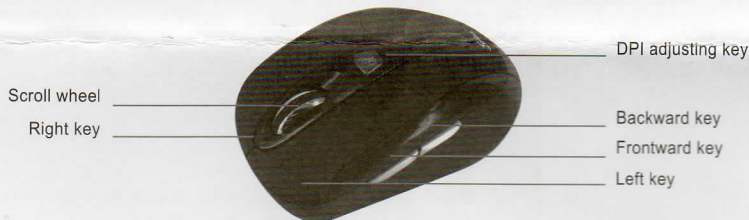
- 1 x Bluetooth optical mouse
- 2 x AAA alkaline batteries
- 1 x User manual

3. SYSTEMS SUPPORTED

The wireless Bluetooth mouse is compliant with the following operating systems:

- Microsoft Windows 2000/2003/XP/VISTA/7
- Apple Mac OS 10.x

4. KEY-PRESS INSTRUCTION



1) System requirement

- A computer with a Bluetooth receiver installed and working.

2) Installing batteries

Whenever new batteries are installed, make sure that they are fresh 1.5V AAA batteries.

- Remove the battery cover.
- Insert two AAA batteries into the battery compartment and make sure of the polarity.
Replace the battery cover and make sure it is locked.
- Switch the mouse on, LED light will blink

3) Description of keys and DPI Adjustment

a) Using "DPI-Adjusting key", the resolution of the mouse can be switched between 800/1200/1600 DPI. The LED lights differently, depending on the resolution:

Resolution	LED behavior
800 DPI	Slow
1200 DPI	Faster
1600 DPI	Fastest

b) Backward and Forward keys will help you to change pages easily when using a web browser.

3) Connecting the Bluetooth mouse

Before you install the Bluetooth mouse, please make sure your computer supports Bluetooth function and Bluetooth software is correctly installed.

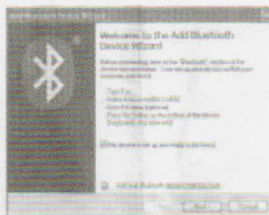
For the pairing, press the bottom blue pairing button for 2 seconds, the LED light "DPI adjusting key" will shine: it is now searching the Bluetooth device. And please follow the procedure to install the mouse.

5. INSTALLATION WITH MICROSOFT BUILT-IN SOFTWARE

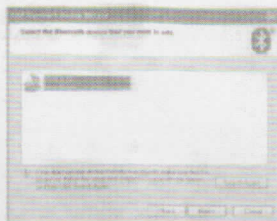
1. Make sure that the Bluetooth function has been activated on your computer and make sure the mouse is ready for pairing. Double click the Bluetooth Icon on the Task Bar or in the Control Panel, click « Add a Bluetooth device »



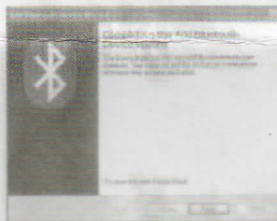
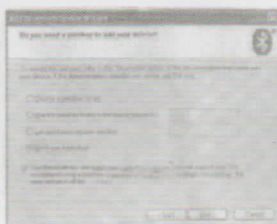
2. Select "My device is set up and ready to be found", click next



3. Select Bluetooth mouse, click "Next"



4. Select "Don't use a passkey", click "Next" and then "Finish"



CE This product is in compliance with the essential requirements of the European Directives for which it is concerned.
You can download declaration of conformity on the website : <http://www.connectland.eu>