

INTRODUCTION

This 1-Lane PCI-Express 2.0 USB 3.1 Gen1(USB3.0) Host Controller Card complies with the Universal Serial Bus 3.0 Specification Revision 1.0 and PCI Express Generation 2 specification. The Super Speed USB 3.1 Gen1(USB3.0) standard, operating at 5 Gbps full-duplex mode, is 10 times faster than USB 2.0 High-Speed (480 Mbps) standard. The product is also backward compatible with current USB 2.0 devices running at High-Speed (480 Mbps), Full-Speed (12 Mbps), and Low-Speed (1.5 Mbps) modes.

FEATURES AND SPECIFICATION

General

- Based on VLI USB 3.1 Gen1(USB3.0) Host Controller IC
- Compliant with Intel's Extensible Host Controller Interface (xHCI) Specification Revision 1.0
- Supports Windows 10 / 8.1 / 8 / 7 / Vista / XP 32-/64-bit operating systems

PCI-Express Interface

- PCI-Express 2.0 1-Lane (x1) interface
- Compliant with PCI Express Base Specification Revision 2.0
- Supports PCI-Bus Power Management Interface Specification Revision 1.2

USB Interface

- Compliant with Universal Serial Bus 3.0 Specification Revision 1.0
- USB 3.1 Gen1(USB3.0) Super-Speed (5 Gbps) host ports, backward compatible with USB 2.0 High-Speed (480Mbps), Full-Speed (12Mbps) and Low-Speed (1.5Mbps) interface
- Supports all USB compliant data transfer types (Control / Bulk / Interrupt / Isochronous)
- Supports all USB compliant peripherals (e.g. keyboard, mouse, monitor, joystick, etc.)
- Supports Bulk Only Transfer (BOT) mode and USB Attached SCSI Protocol (UASP) mode
- Full support of real time dynamic insertion and removal of USB devices
- Internal HDD power connector for supplying +5V power to the USB ports

PACKAGE CONTENTS

Please check whether the package contains following items. If any item is missing or damaged, please contact the retailer as soon as possible:

- PCI-Express USB 3.1 Gen1(USB3.0) Host Controller Card (x1)
- Driver CD (x1)
- User Manual (x1)

SYSTEM REQUIREMENT

- Motherboard with one available x1, x4, x8 or x16 PCI-Express 1.0 / 2.0 slot. PCI Express 2.0 slot is highly recommended for fully utilizing the Super Speed USB 3.1 Gen1(USB3.0 5 Gbps) bandwidth
- Supported operating system
- Optical drive for driver installation

WARNING

Before installing and activating the controller card, please make sure you have a complete backup of your existing data from hard drives. Manufacturer is not responsible for data loss due to abuse, misuse, or neglect. Should you have any installation problem, please contact your dealer for assistance.

HARDWARE INSTALLATION

1. Turn off your computer and all external devices connected to it.
2. Disconnect your computer from the power sources.
3. Open the computer case. Refer to your computer user manual for more details.
4. Locate an available PCI-Express slot (preferably a PCI Express 2.0 slot) and remove the slot bracket. Save the bracket screw for later use.
5. Align the controller card horizontally with respect to the PCI-Express slot and insert it into the slot firmly and evenly.
6. Once the controller card is properly positioned into the slot, fasten it to the computer case with the bracket screw which has been previously saved.
7. To get power for USB devices, connect the power cable to the controller card from the power supply unit (PSU) of the computer.
8. Secure the computer case and switch on your computer.

DRIVER INSTALLATION

Installing Windows 10/ 8.1 / 8 / 7 / Vista 32/64-bit driver:

1. Insert the driver CD disc into the optical drive. Assume the optical drive letter is **D:**.
2. Go to the driver folder **D:\VLI\VL80x\ Vista or above**
3. Double click on "**Setup.exe**"
4. The Installation Wizard will guide you through the setup process. Follow the on-screen instruction until the installation is completed.

Installing Windows XP 32/64-bit driver:

1. Insert the driver CD disc into the optical drive. Assume the optical drive letter is **D:**.
2. Go to the driver folder **D:\VLI\VL80x\XP**
3. Double click on "**Setup.exe**"
4. The Installation Wizard will guide you through the setup process. Follow the on-screen instruction until the installation is completed.

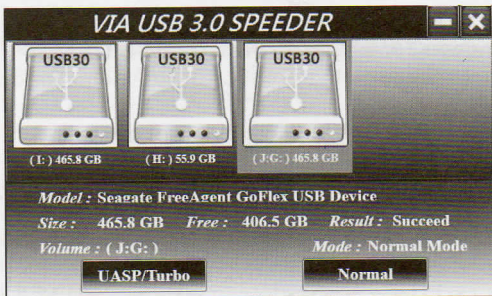
Verifying Driver Installation:

To verify if the driver has been installed correctly, make sure the following items appear in the Universal Serial Bus Controllers category in the Windows Device Manager, and there is no yellow exclamation mark next to any of these items, then you have successfully installed the driver for the product.

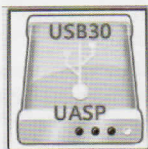
VIA USB eXtensible Host Controller VIA USB 3 Root Hub

How to use UASP mode:

1. After installing Windows driver, please connect USB 3.1 Gen1(USB3.0) / USB2.0 storage device which supports UASP mode.
2. Open **VIA UASP Control Tool** listed in **Start** menu.
3. Select USB storage device, then click on "**UASP/Turbo**" button, showed as below:



4. USB storage device with "**UASP**" character shows it works with UASP mode.



5. If USB storage device doesn't support UASP mode, then it will work with Turbo mode.



GETTING THE LATEST DRIVER, SOFTWARE & DOCUMENT

1. Visit <http://www.drivers-download.com>
2. In "**Drivers Search**" section, enter the Download code (DL code):
DL-0313102 to search for the latest driver, software and document.

All specifications and information are subjected to change without prior notice.

All brand /company names, logos and trademarks referenced in this manual are the property of their respective owners.
Our products including the packaging are not toys and they might contain small parts and sharp objects. Please keep away from children.