

User Manual

INTRODUCTION

Catch up to speed with modern devices with this PCI-Express 2.0 to USB 3.0 and SATA-III (up to 6.0Gbps!) Combo Card with Etron, ASMedia Chipset! It has 2 USB 3.0 Ports and 2 internal SATA-III slots in one PCI-Express card with a Unique HDD activity LED indicator circuit design!

FEATURES AND SPECIFICATION

General

- PCI-Express 2.0 interface
- Backwards compatible to PCI-Express 1.0a with data transfer rate up to 2.5Gbps
- Microsoft drivers for Windows 8 / 7 / Vista / XP / Server 2008 32-/64-bit OS, Mac OS 10.7.1 or above, and Linux Kernel 2.6.31 or later
- Supports Standard and Low-profile desktop computers

USB 3.0 Interface

- Compliant with Universal Serial Bus 3.0 Specification Revision 1.0
- Provides USB 3.0 Super-Speed (5 Gbps) host port, backward compatible with USB 2.0 High-Speed (480Mbps), Full-Speed (12Mbps) and Low-Speed (1.5Mbps) interface
- Supports all USB compliant data transfer types (Control / Bulk / Interrupt / Isochronous)
- Supports all USB compliant peripherals (e.g. keyboard, mouse, monitor, joystick, etc.)
- Full support of real time dynamic insertion and removal of USB devices
- Supports Battery Charging 1.2 and Popular Apple devices via USB
- Internal HDD power connector for supplying extra +5V power to the USB ports

SATA-III Interface

- Compliant with Serial-ATA Specification 3.0
- Supports communication speed of 6.0Gbps, 3.0Gbps, and 1.5Gbps
- Compatible with SATA-III (6Gbps), SATA-II (3Gbps), SATA-I (1.5Gbps) hard drives and SSD's
- Supports Gen1m and Gen2m SATA PHY
- Supports Native Command Queue (NCQ)
- Supports SATA Port Multiplier
- Supports SATA port Hot-Plug
- Unique Hard Drive Activity LED indicator circuit design: The LED blinks when there is read/write activity on any one of the hard drive connected to the motherboard or to this add-on card

PACKAGE CONTENTS

Please check whether the package contains following items. If any item is missing or damaged, please contact the retailer as soon as possible:

- PCI-Express 2.0 to USB 3.0 and SATA 6Gbps Combo Card x 1
- Driver CD x 1
- User Manual x 1
- Optional power cable x 1
- Optional LED extension cable x 1

SYSTEM REQUIREMENT

- Motherboard with one suitable PCI-Express 1.0 / 2.0 slot
- PCI Express 2.0 interface is recommended for fully utilizing the USB 3.0 (5.0Gbps) and SATA-III (6.0Gbps) bandwidth

- Supported operation system (Windows 8 / 7 / Vista / XP / Server 2008 32-/64-bit OS, Mac OS 10.7.1 or above, and Linux Kernel 2.6.31 or later)
- Optical drive for driver installation

WARNING

Before installing and activating the controller card, please make sure you have a complete backup of your existing data from hard drives. Manufacturer is not responsible for data loss due to abuse, misuse, or neglect. Should you have any installation problem, please contact your dealer for assistance.

HARDWARE INSTALLATION

1. Turn off your computer and all external devices connected to it.
2. Disconnect your computer from the power sources.
3. Open the computer case. Refer to your computer user manual for more details.
4. Locate an available PCI-Express slot (preferably a PCI Express 2.0 slot) and remove the slot bracket. Save the bracket screw for later use.
5. Align the controller card horizontally with respect to the PCI-Express slot and insert it into the slot firmly and evenly.
6. Once you have properly positioned the card into the slot, fasten it to the computer case with the bracket screw you have saved.
7. Connect the power supply unit (PSU) of the computer to our product.
8. Mount the SATA hard disk(s) on the computer case.
9. Connect the power cable to the SATA hard disk(s).
10. Connect the SATA hard disk(s) to the controller card with the SATA cable.
11. Connect the computer case's front panel Hard Disk LED cable to pin header JP1 (See [Figure 1](#))



Figure 1

12. Connect the one end of the LED cable (optional) to pin header JP2, and the other end to your motherboard's HDD LED connector.
13. Secure the computer case and switch on your computer.

DRIVER INSTALLATION

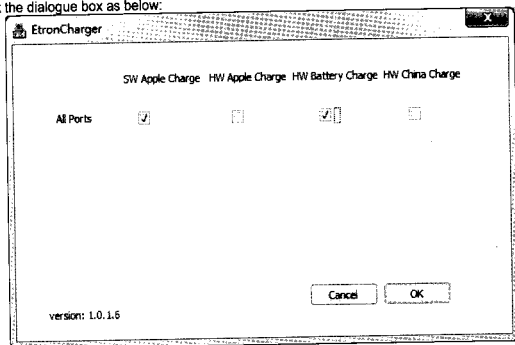
Installing Windows 8 / 7 / Vista / XP / Server 2008 32-/64-bit driver:

1. Start Windows and insert the driver CD into the CD-ROM drive, Example: drive D.
2. Windows will automatically detect the card. **Ignore the driver installation wizard** by Operating System.
3. Browse to the following folder on the driver CD to install USB 3.0 driver:
D:\Etron\EJ168\
4. Double click on **Setup.exe**.
5. The Installation Wizard will guide you through the setup process.
6. Browse to the following folder on the driver CD to install SATA-III driver: (If the operating system is Windows 8, please skip step 6, 7, 8, no need to install SATA-III driver on Windows 8)
D:\ASMedia\ASM106x\Windows\
7. Run **Setup.exe** to start driver installation.
8. Follow the on-screen instruction until the installation is completed.

Installing Charging application for Windows operating system:

1. Start Windows and insert the driver CD into the CD-ROM drive, assume drive D.

2. Go to the driver folder **D:\Etron\Charger\EJ168**
3. Double click on **"EtronCharger.exe"**
4. Check the dialogue box as below:



5. Reboot computer, otherwise the charging application might not work properly.
6. Now you can charge Apple device (iPhone, iPad and iPod) or other mobile phone with its USB cable.

Installing Driver for MAC

1. For Mac OS 10.7.1 or above OS, please go to the driver folder on the driver CD to run the installation package in order to install USB 3.0 driver:
\Etron\MacOS
2. SATA-III is natively supported by Mac OS 10.7.1 or above OS, no need to install driver for it.

Installing Driver for Linux

This card is natively supported by Linux Kernel 2.6.31 or later OS, no need to install driver for it.

Updating Drivers and Manual

The latest drivers, full version manual and last-minute changes document are available on the website below:

<http://www.drivers-download.com>

Search for the following Download Code from "Drivers Search":

Chipset	Description	Download Code
ASMedia ASM1061	PCI-Express to SATA-III host controller card	DL-0420001
Etron EJ168A	PCI-Express to USB 3.0 host controller card	DL-0430001

All contents and specification mentioned in this manual are subject to change without prior notice.
All brand / company names, logos and trademarks referenced in this manual are the property of their respective owners.
Our products including the packaging are not toys and they might contain small parts and sharp objects. Please keep away from children.