

## Features:

- Integrated 10M BASE-T and 100/1000M/2.5G BASE-T 802.3 compatible transceiver
- Supports 2.5G Lite (1G data rate) mode
- Auto-Negotiation with Extended Next Page capability (XNP)
- Compatible with NBASE-TM Alliance PHY Specification
- Supports PCI Express 2.1
- Supports pair swap/polarity/skew correction
- Crossover Detection & Auto-Correction
- Supports 1-Lane 2.5/5Gbps PCI Express Bus
- Supports hardware ECC (Error Correction Code) function
- Supports hardware CRC (Cyclic Redundancy Check) function
- Transmit/Receive on-chip buffer support
- Supports PCI MSI (Message Signaled Interrupt) and MSI-X
- Supports power down/link down power saving/PHY disable mode
- Supports ECMA-393 ProxZzy Standard for sleeping hosts
- Supports LTR (Latency Tolerance Reporting)
- Wake-On-LAN and 'RealWoW' Technology (remote wake-up) support
- Supports 32-set 128-byte Wake-Up Frame pattern exact matching
- Supports Microsoft WPI (Wake Packet Indication)
- Supports PCIe L1 substate L1.1 and L1.2
- Compatible with IEEE 802.3, IEEE 802.3u, IEEE 802.3ab
- Supports IEEE 1588v1, IEEE 1588v2, IEEE 802.1AS time synchronization
- Supports IEEE 802.1Qav credit-based shaper algorithm
- Supports IEEE 802.1P Layer 2 Priority Encoding
- Supports IEEE 802.1Q VLAN tagging
- Supports IEEE 802.1ad Double VLAN
- Supports IEEE 802.3az (Energy Efficient Ethernet)
- Supports IEEE 802.3bz (2.5GBase-T)
- Supports Full Duplex flow control (IEEE 802.3x)
- Supports jumbo frame to 16K bytes

## PCIe to 10 /100/1000M/2.5G Ethernet Card

## User Manual Uver. 1.00

## Package Contents:

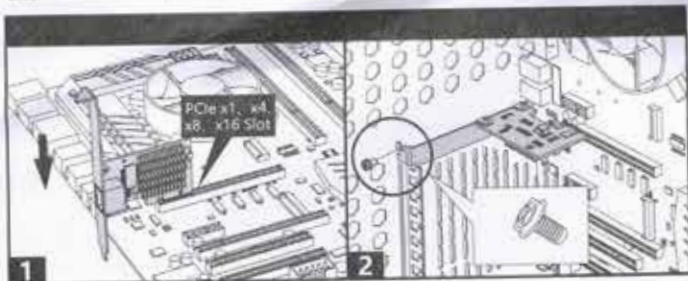
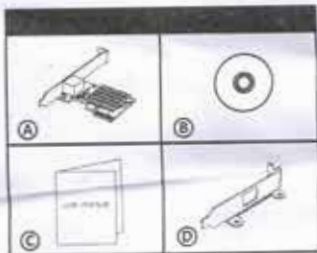
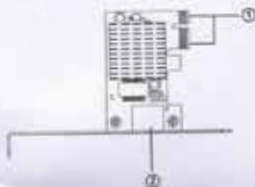
- 1 x PCI-Express to 10 /100/1000M/2.5G Ethernet Card
- 1 x User Manual
- 1 x Driver CD
- 1 x Low-profile bracket

## System Requirements:

- Windows OS

① PCI-E x1 bus connector.

② RJ45 interface.



- Linux, MAC OS and DOS
- PCI Express-enabled system with an available PCI Express slot

## Driver Installation:

1. Turn on your computer.
2. Once Windows is running, a new network controller card is detected.
3. If the Windows asks for driver for the network controller card, then insert Driver CD into the optical drive (Assume the optical driver letter is H)
4. Browse to the following path (Assume the Windows OS used is Windows 10)  
H:\Realtek\RTL8125\Windows 10
5. Execute "setup.exe" to install the driver.
6. Follow the on screen instructions until the driver is installed completely.

## Hardware Verification:

Verifying for Windows XP/Vista/7/8/10

1. Click on the "Device Manager" tab in the Windows Control Panel.  
Start > Control Panel > Device Manager
2. Entry "Network adapters" item, and you can read "Realtek PCIe 2.5GbE Family Controller" in the Device Manager

## Troubleshooting Tips:

The computer can NOT detect the 2.5Gbps Ethernet PCIe Card

1. See if the golden connectors on the card are clean; if not, clean the connector surface.
2. Make sure that the PCI Express card is correctly plugged into the PCI Express slot.  
If not, turn off the computer and plug it again.
3. If still NOT, please change to another PCI Express slot on your motherboard
4. The board itself might be defective. You can try another motherboard to test the card.  
Ethernet PCIe Card working or not.

I can not use Gigabit Ethernet transfer speed

1. Please affirm your Ethernet environment supporting Gigabit structure
2. Please use CAT 6 UTP/STP cable.